



2 Riverlight Quay, Nine Elms Lane
London SW11

GARTON JONES.COM



2 Riverlight Quay, Nine Elms Lane London, SW11

GARTON JONES.COM

9 Albert
Embankment
London
SE1 7SP

Lettings:
+44 (0) 20 7735 1888
nineelms@gartonjones.com
www.gartonjones.com

£900 Per Week

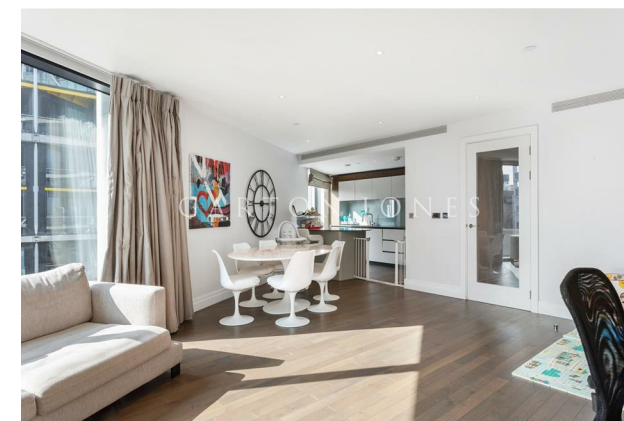
A bright and spacious 2 double bedroom apartment of 1,133sq.ft (105.30sq.m) available to rent in Riverlight Quay, a popular residential development located on the banks of the River Thames in the heart of Nine Elms. The property is furnished to high standard and further benefits from a dual aspect open plan reception room with full height floor to ceiling windows, there is a smart integrated kitchen, 2 luxury bathrooms (1 en-suite), 2 balconies offering partial views of the River Thames.

Residents of Riverlight Quay have the use of a 24-hour concierge, a residents health spa with a well-equipped "river view" gymnasium, a heated swimming pool with steam room, sauna, and a Jacuzzi, as well as a cinema screening room and virtual golf facility. The on-site amenities include the Black Cab Coffee Co, Nine Elms Tavern, and Sainsbury's. There is also a Waitrose supermarket at Embassy Gardens, opposite, and you will also be within easy reach of other local shops and restaurants forming the Nine Elms regeneration with both Nine Elms & Battersea Power Station Tube Stations on your doorstep.

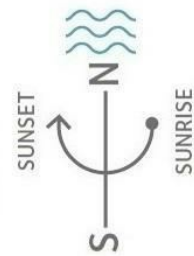
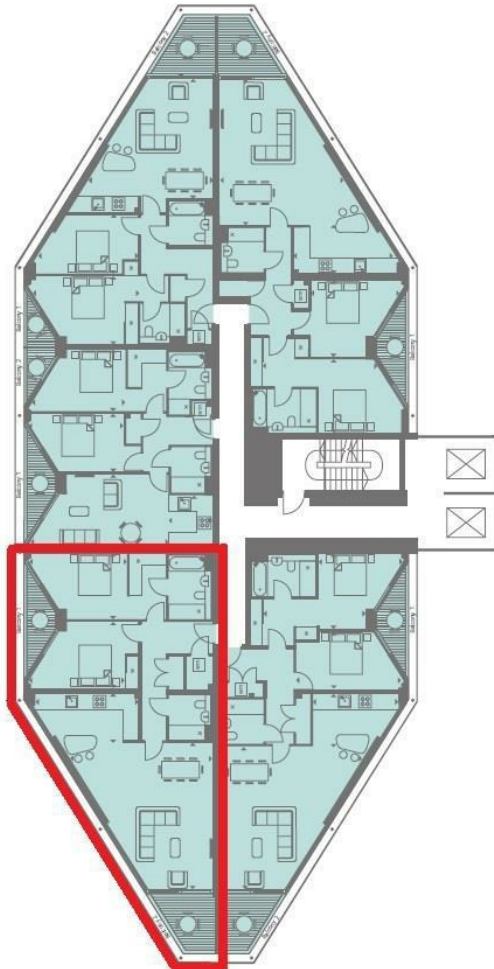
Please note furniture may differ to that shown in the current photos.

Wandsworth Council Tax Band G - £1,523.57 per annum
12 Month Minimum Term
5 Week Security Deposit

- 2 Bedrooms
- 1,133sq.ft (105sq.m)
- 2 Bathrooms (1 En-Suite)
- South West Aspect
- 2 Balconies
- 24 Hour Concierge
- Residents Gym
- Swimming Pool, Spa & Jacuzzi
- Cinema Screening Room & Virtual Golf
- 0.2 Miles to Battersea Power Station Tube



Thames River



INTERNAL AREA M ² /SQ FT	105.30 / 1133
EXTERNAL AREA M ² /SQ FT	11.59 / 124
Living / Dining	6.96m x 6.91m / 22'8" x 22'6"
Kitchen	4.70m x 2.17m / 15'4" x 7'1"
Bedroom 1	4.48m x 3.11m / 14'6" x 10'2"
Bedroom 2	4.39m x 3.11m / 14'4" x 10'2"
Balcony 1	5.46m x 1.50m / 17'9" x 4'9"
Balcony 2	3.25m x 2.80m / 10'6" x 9'1"

